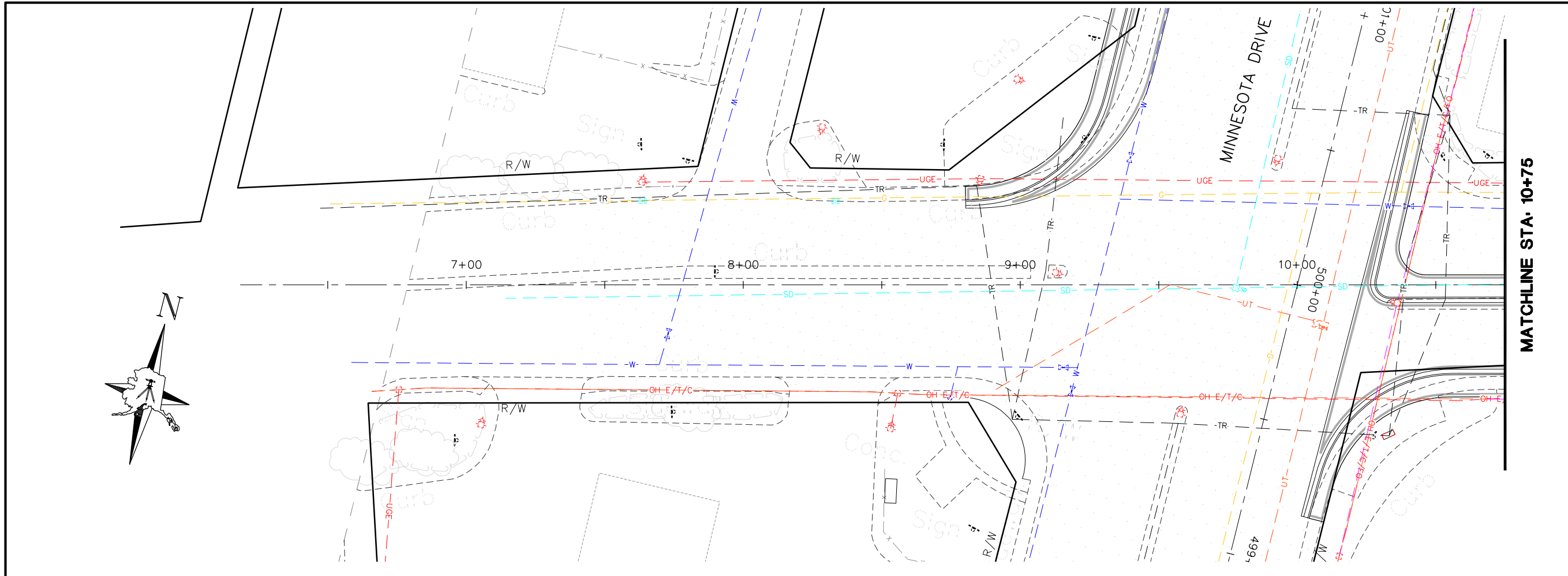
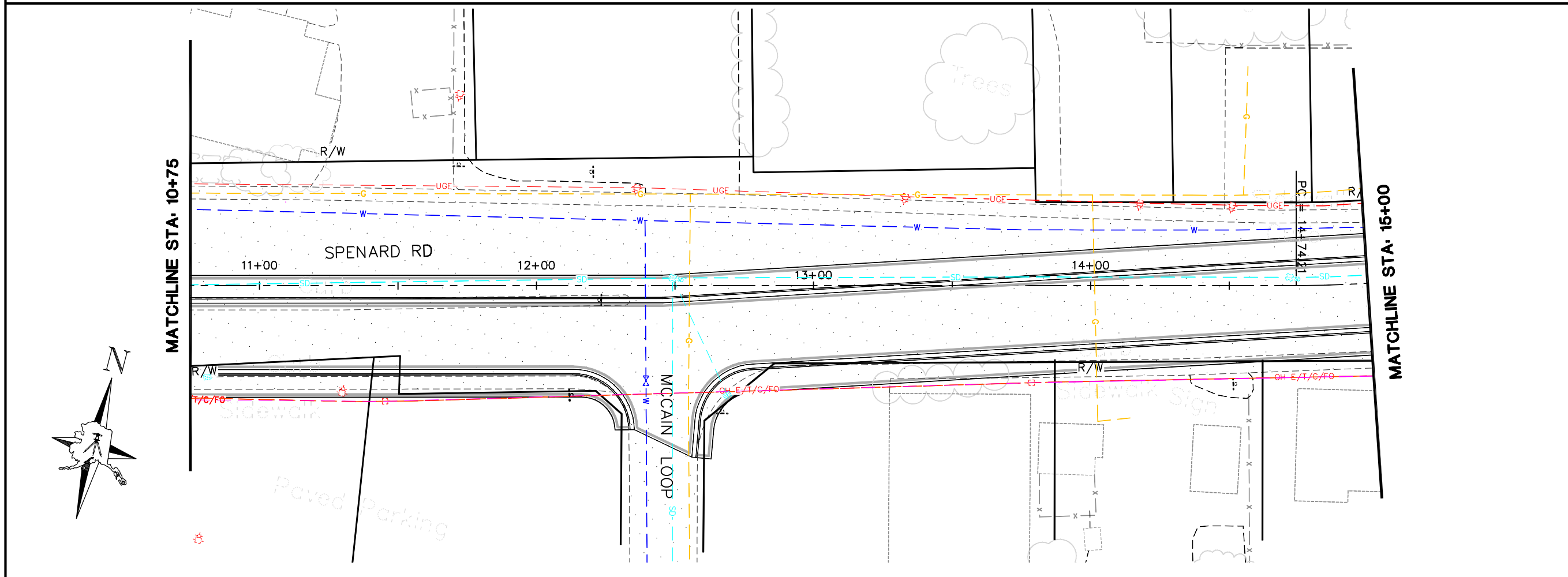


PER FINAL
MARCH 1, 2007



MATCHLINE STA. 10+75



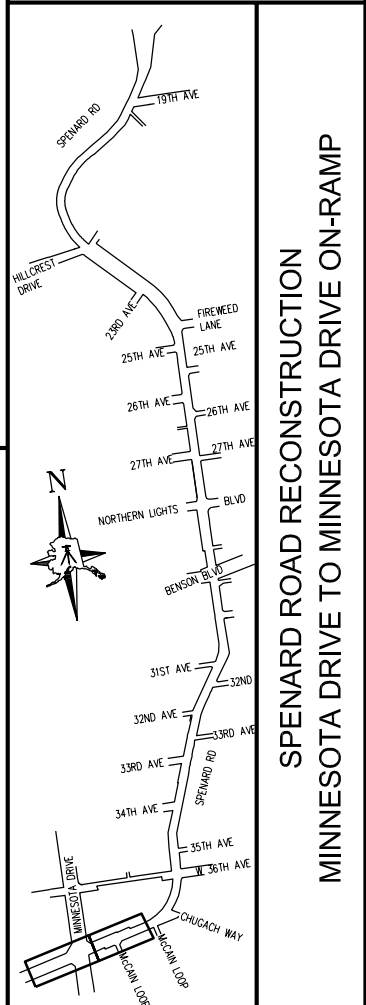
MATCHLINE STA. 10+75

MATCHLINE STA. 15+00

SHEET NO.	TOTAL SHEETS
1	12
STATE	YEAR
ALASKA	2006
PROJECT DESIGNATION	
HRO-0001(172)/53986	

UTILITY LOCATE LEGEND

ELECTRIC	— OHE —	— UGE —
TELEPHONE	— T —	
CABLE	— C —	
FIBER OPTIC	— FO —	
SIGNALIZATION	— TR —	
GAS	— G —	
STORM DRAIN	— SD —	
WATER	— W —	
SEWER	— S —	
OH	OVERHEAD UTILITY	
U	UNDERGROUND UTILITY	



SPENARD ROAD RECONSTRUCTION
MINNESOTA DRIVE TO MINNESOTA DRIVE ON-RAMP

Drawing Prepared by:
LOUNSBURY & ASSOCIATES, INC.

STATE OF ALASKA
DEPARTMENT OF TRANSPORTATION
AND PUBLIC FACILITIES

FIGURE K-1
EXISTING UTILITIES
SPENARD ROAD
STA BOP TO STA 15+00