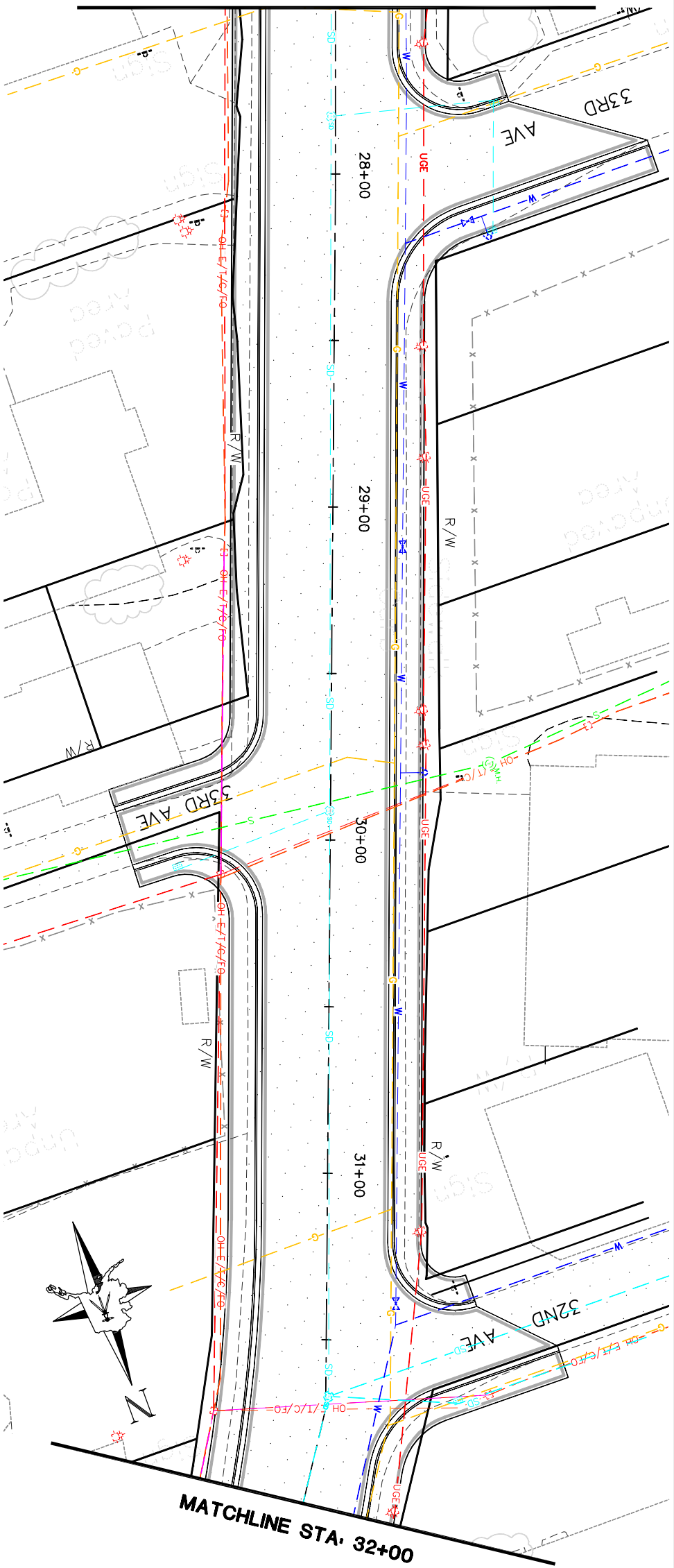
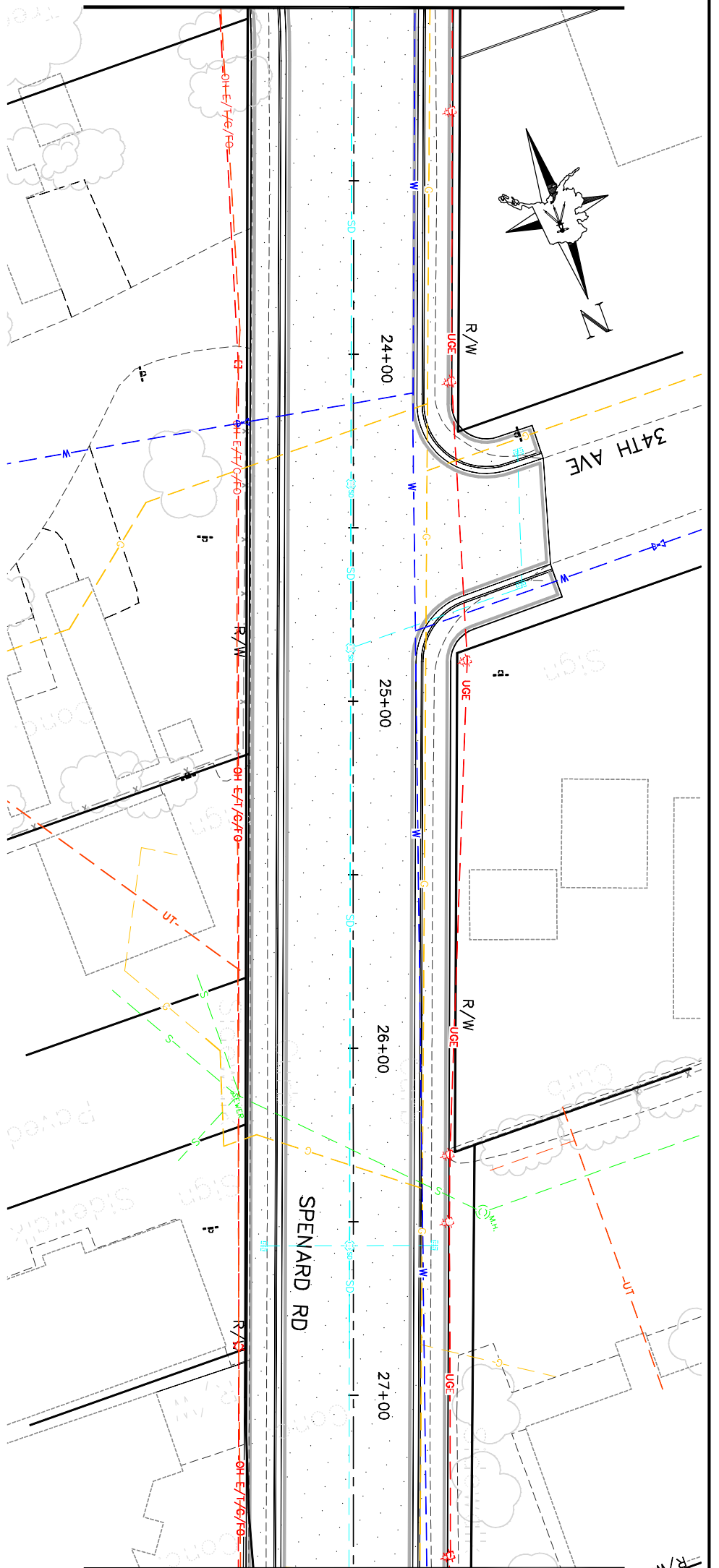


MATCHLINE STA. 27+50



MATCHLINE STA. 32+00

MATCHLINE STA. 23+00



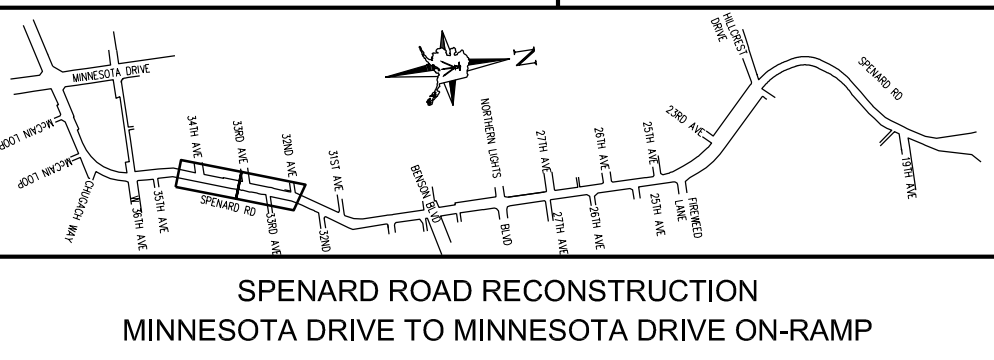
MATCHLINE STA. 27+50

SHEET NO. 3 TOTAL SHEETS 12

STATE ALASKA YEAR 2006

PROJECT DESIGNATION HRO-0001(172)/53986

UTILITY LOCATE LEGEND	
— OH —	ELECTRIC
— T —	TELEPHONE
— C —	CABLE
— FO —	FIBER OPTIC
— TR —	SIGNALIZATION
— G —	GAS
— SD —	STORM DRAIN
— W —	WATER
— S —	SEWER
— OH —	OVERHEAD UTILITY
— U —	UNDERGROUND UTILITY



SPENARD ROAD RECONSTRUCTION
MINNESOTA DRIVE TO MINNESOTA DRIVE ON-RAMP

Drawing Prepared by:
LOUNSBURY & ASSOCIATES, INC.

STATE OF ALASKA
DEPARTMENT OF TRANSPORTATION
AND PUBLIC FACILITIES

FIGURE K-1
EXISTING UTILITIES
SPENARD ROAD
STA 23+00 TO STA 32+00